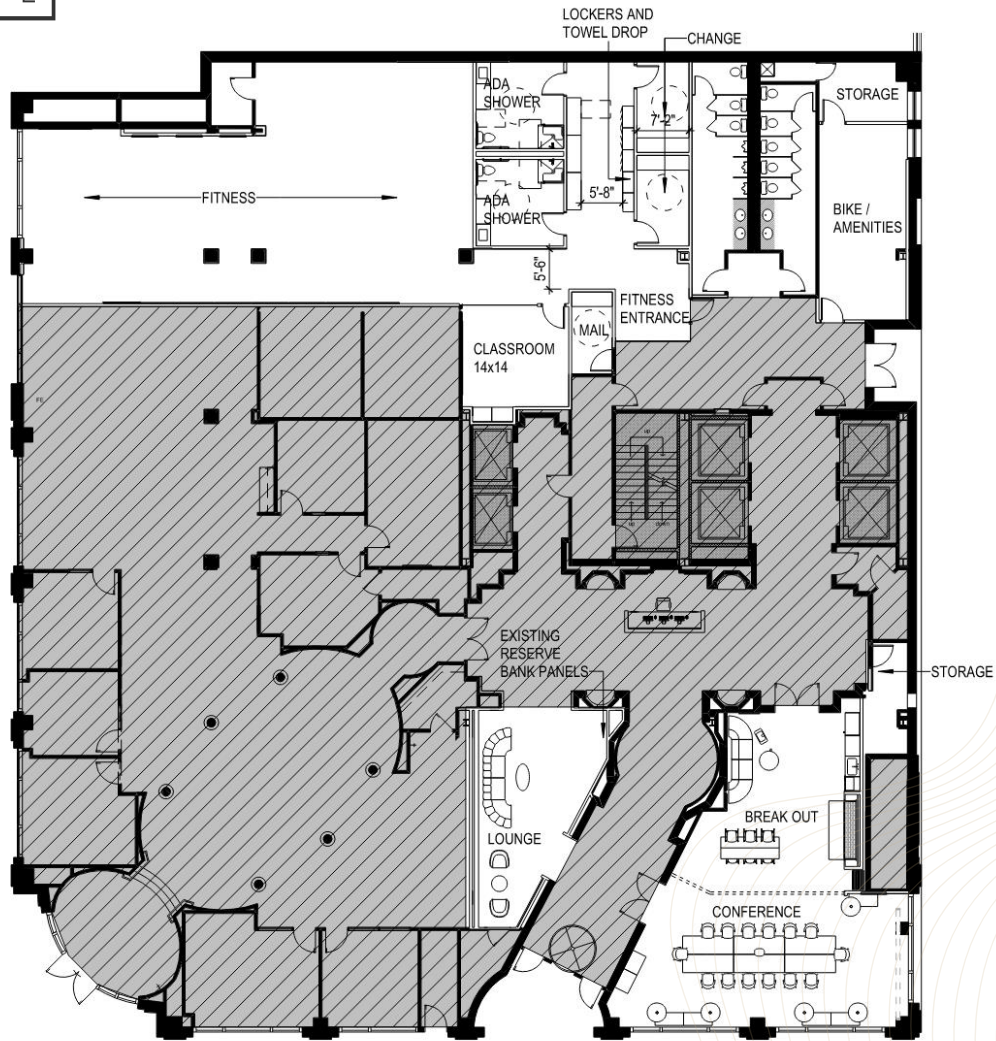




RENOVATED FLOOR PLANS - GROUND



CONTACT:

TODD WHEELER
Vice Chairman
+1 303 813 6441
todd.wheeler@cushwake.com

MICHAEL COPPOLA
Senior Associate
+1 303 312 4212
michael.coppola@cushwake.com



1401 Lawrence Sreet, Suite 1100 | Denver, Colorado 80202 | T +1 303 292 3700 | F +1 303 534 8270